

Technical information



STOLL front loaders

Base Control is stiff to operate

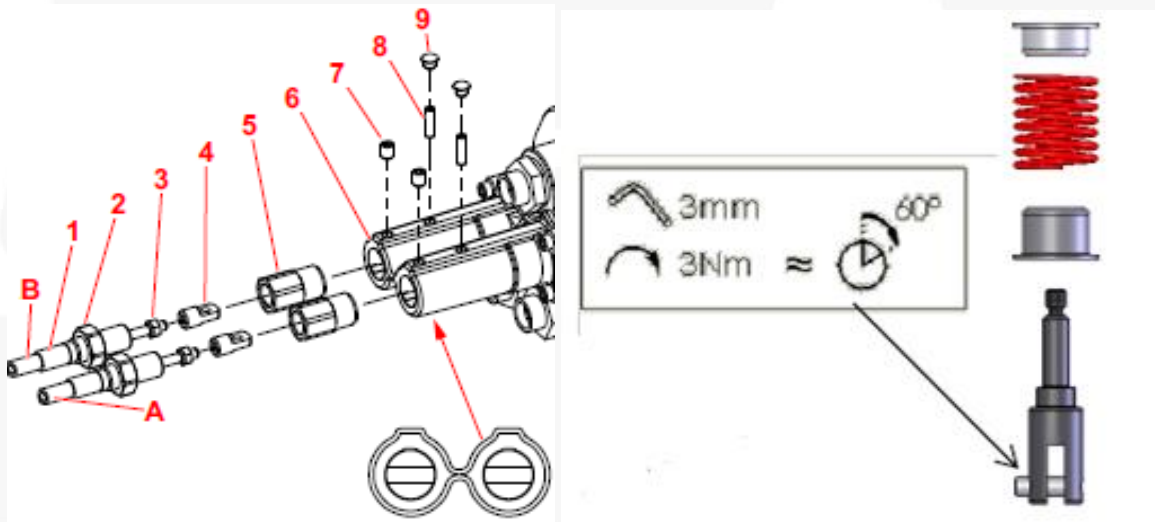
Scope:	Stoll Base Control with Hydac valve
Symptom:	the operating lever is stiff to operate
Possible cause:	Screw fitting of the Bowden cable on the Hydac hydraulic valve

With the Stoll Base Control, the hydraulic valve made by Hydac operated by the Bowden cable may make it stiff to operate if the retaining screw (8) of the Bowden cable has not been installed correctly.

The reason for this is because if the torque is too high, the grub screw (8) can bend the fork or, in the worst case scenario, break the fork.

A bent fork often feels like a clamping valve piston for the operator. A broken fork has a similar effect or results in the lever not being able to move at all or only with a huge amount of effort.

It can likewise cause the valve piston to twist, as the grub screw also acts as a guide pin. If the fork is damaged, it must be replaced.



TI-2.3-09_EN Created by KH at 08.12.2017

Technical information



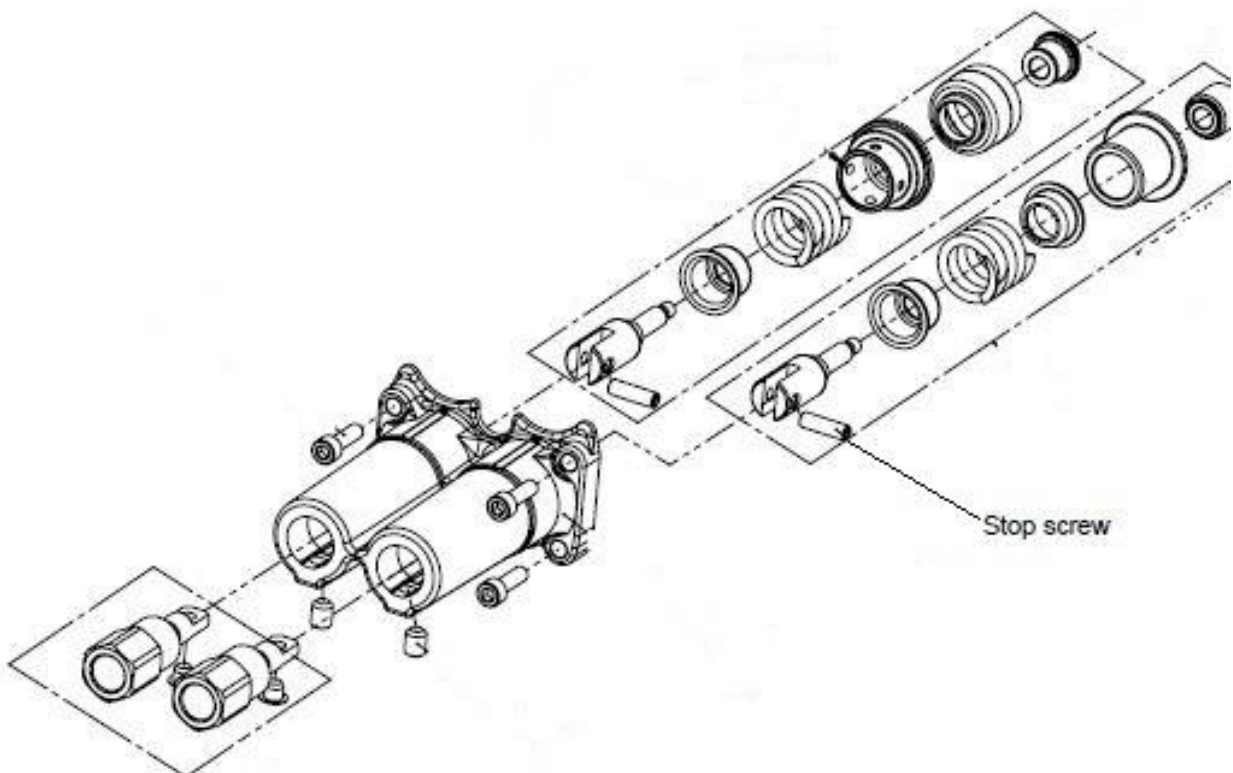
STOLL front loaders

The correct installation sequence is as follows:

- Lock the operating lever in the middle position
- Unscrew the grub screws (7,8) a little
- Screw the adapter (4) onto the Bowden cable and secure it with a lock nut (3)
- Screw on adapter sleeve (5)
- Push the Bowden cable in at the valve (6) and fix it with a grub screw (8) (**maximum torque 3 N m**)
- Screw the adapter sleeve (5) against housing (6) and secure it with a grub screw (7)
- Secure the Bowden cable with a lock nut (2) to secure the Bowden cable sleeve from rotating
- Push in the stopper (9)

After fitting both Bowden cables and attaching the valve to the holder:

- Check that the Bowden cable control is working properly, even when deflecting in two directions at the same time
- Correct the setting if necessary!



TI-2.3-09_EN Created by KH at 08.12.2017