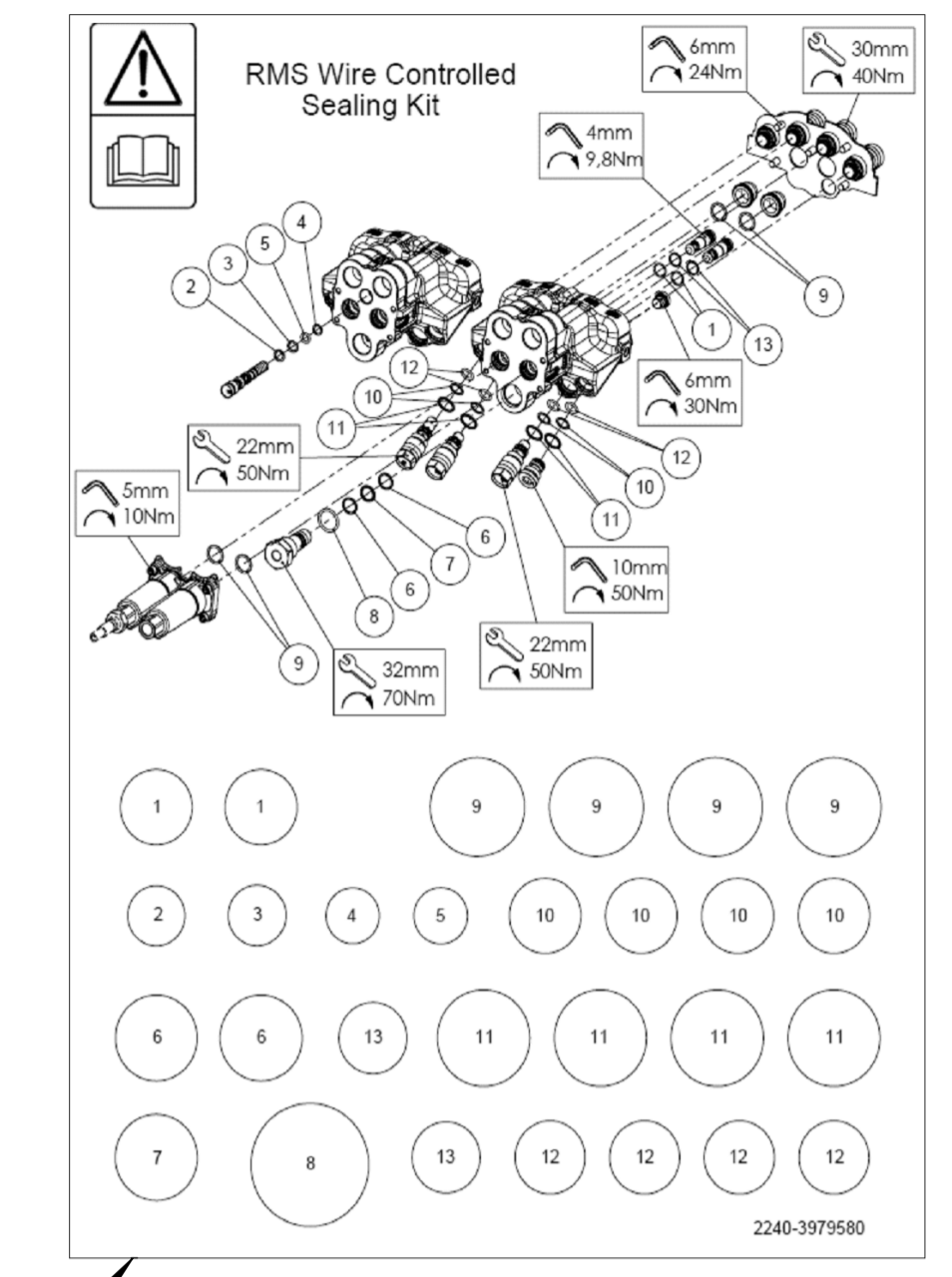
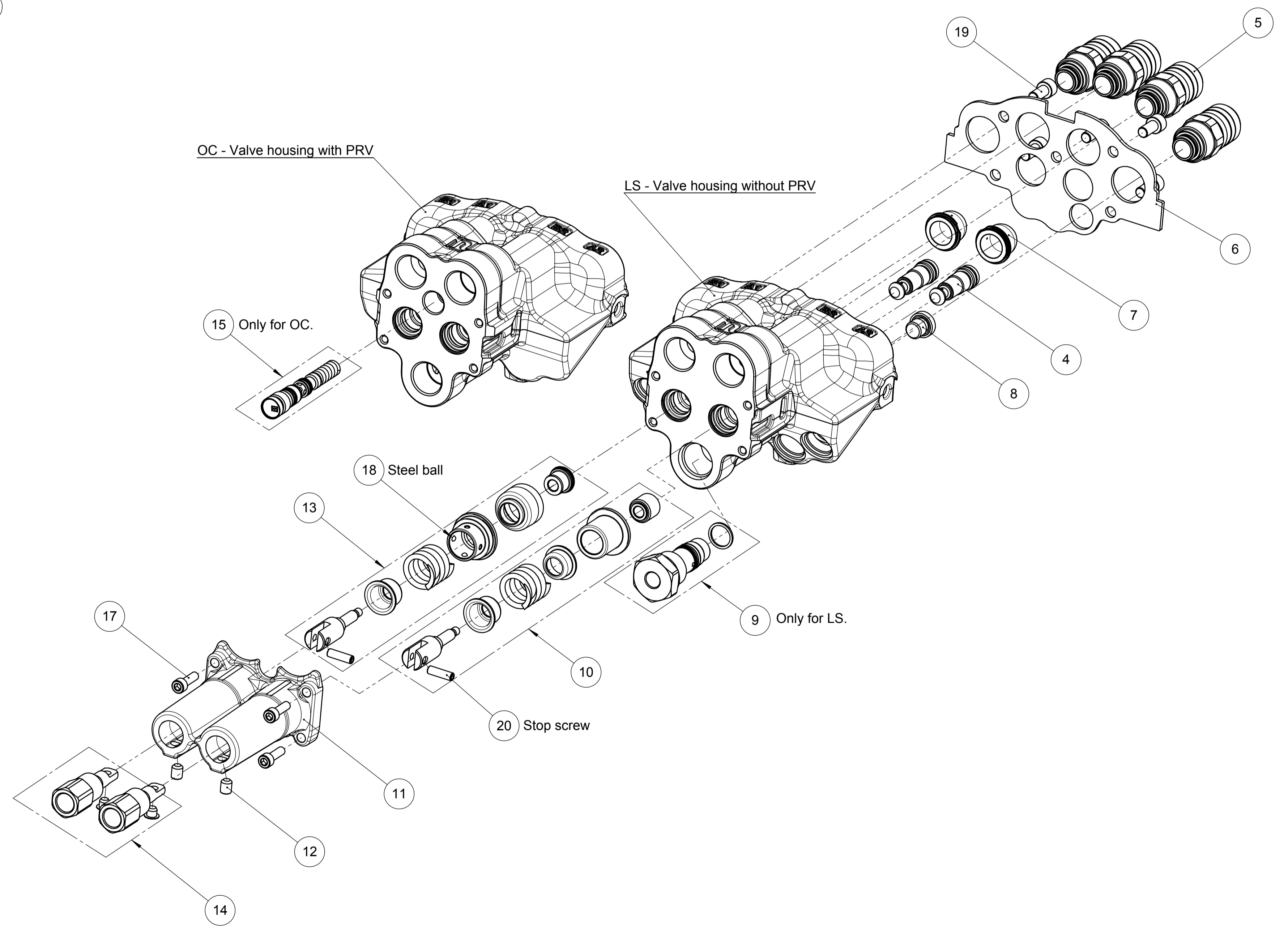
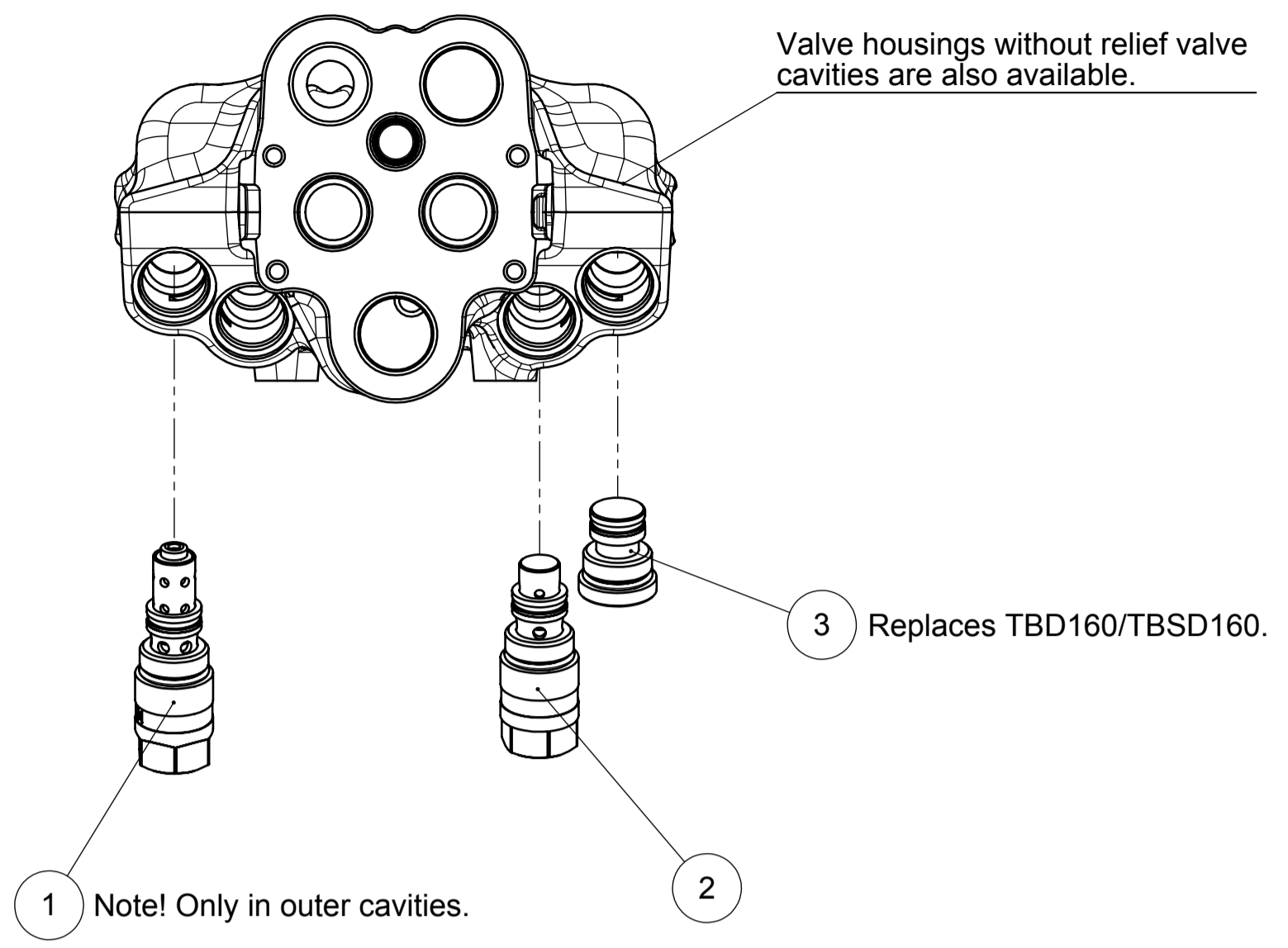


3D-CAD
Beakta skyddsnotis ISO 16016 / Observing of protection notice ISO 16016

1435590 Wegeventil EWMS-C OC 1435600 Wegeventil EWMS-C LS



16 Sealing kit

EWMS-C OC / LS

<u>Position</u>	<u>Anzahl</u>	<u>Bestellnr.</u>	<u>Bezeichnung</u>	
1	1		TBSD 160	2275-210540
2	1	1437790	RELIEF VALVE TBD 160 220BAR	2275-160338ST
3	1	1437780	PLUG P 400	2310-210313
4	2	1437760	CHECK VALVE	2230-802588
5	4	1436050	RELIEF VALVE TBD 160 220BAR	3095-3887437
6	1	1437740	COVER PLATE	3115-3869397
7	1	1437750	COVER CAP	8145-3883579
8	1	1437770	PG02 PLUG G 1/4"	2310-800925
9	1	1437800	SHUTTLE ASM SV01 LS	2251-3887532
10	1	1437810	SPAREPARTKIT 3-Pos. Sect. 1	2230-3969117
11	1	1437840	COVER HOOD W.CABLE CONN:	8140-3814117
12	2	1437850	Stop SCREW M8x10	8320-080160
13	1	1437820	SPAREPARTKIT 4-Pos. SPOOL	2230-3969115
14	1	1437860	BOWDEN CABLE CONN. KIT	2230-3888478
15	1	1437830	TBD 90 200BAR	2275-3805986
16	1	1437980	SEALING KIT	2240-3979580
17	4	1406020	SOCKET SCREW M8x16 8.8 A2J	8300-060202
18	4	1437880	STEEL BALL 4mm	8075-000008
19	5	0439760	SOCKET SCREW M8x16 8.8 A2J	8300-080162
20	2	1437990	Stop SCREW M6X20	8320-060082
	1	3600090	Ausrüstung Ventilhalter	
	1	3600200	Schr.-Beutel 3/4" 18L für LS	
	1	3600130	Schr.-Beutel 3/4" 18L für OC	
	1	1437160	Staubkappe blau	
	1	1437170	Staubkappe gelb	
	1	1437180	Staubkappe rot	
	1	1437190	Staubkappe grün	